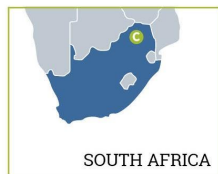


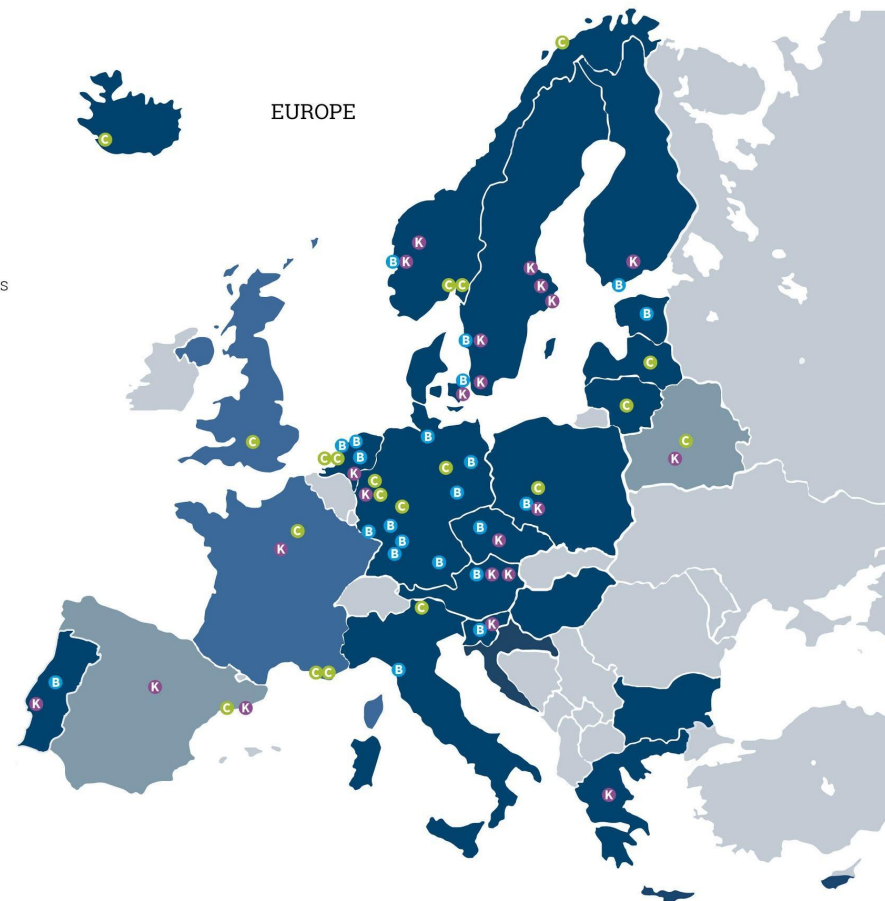
CLARIN Knowledge Centre of Lund University Humanities Lab (CLARIN-HUMLAB)



- ERIC members
- Observers
- Countries with participating centres
- B Centre Providing Data
- C Centre Providing Metadata
- K Knowledge Centre



Contact: johan.frid@humlab.lu.se



CLARIN Knowledge Center of Lund University Humanities Lab

The Humanities Lab is a department for **research infrastructure**, for **inter-disciplinary research** and **training**.

We provide access to **sensor-based technologies**, **methodological know-how** and **archiving expertise**.

Echo-free chamber

Articulography

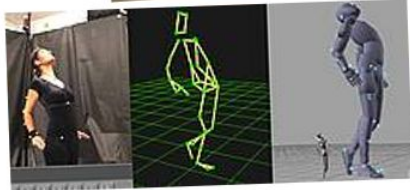
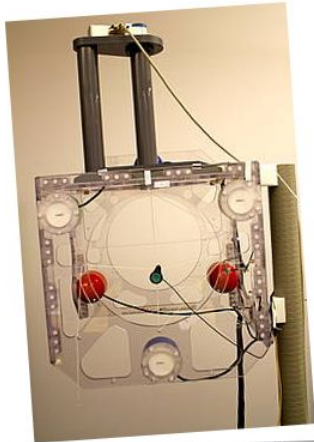
EEG

Motion capture

Eye tracking



vol III, 2020



Field of expertise

- The K-centre is basically open to everything that the lab does!
- language archiving
 - corpus server, C-centre, VLO →
- multimodal and sensor-based methods
 - EEG, eye-tracking, articulography, virtual reality, motion capture
- machine learning-related research on text data
- keystroke logging (language production studies)

Virtual Language Observatory Search Contributors Help

VLO / Faceted search / Search results

Search through 14,942 records

Showing 1 to 10 of 10,836 results within selection for **Lund University Humanities Lab**

Results per page: 10

Use the categories below to limit the search results to those matching the selected value(s).

Language

Collection

lund

Lund University Humanities Lab

Modality

Format

RWAAI - Repository and Workspace for Austroasiatic Intangible Heritage
(Part of Lund University Humanities Lab)

RWAAI is committed to the preservation and ongoing maintenance of both legacy and recent research materials documenting the languages and cultures of Austroasiatic communities of Mainland Southeast Asia and India. It facilitates the presentation of intangible heritage collections in a unique, accessible location for fe...

Landing page for this record at corpora.humlab.lu.se

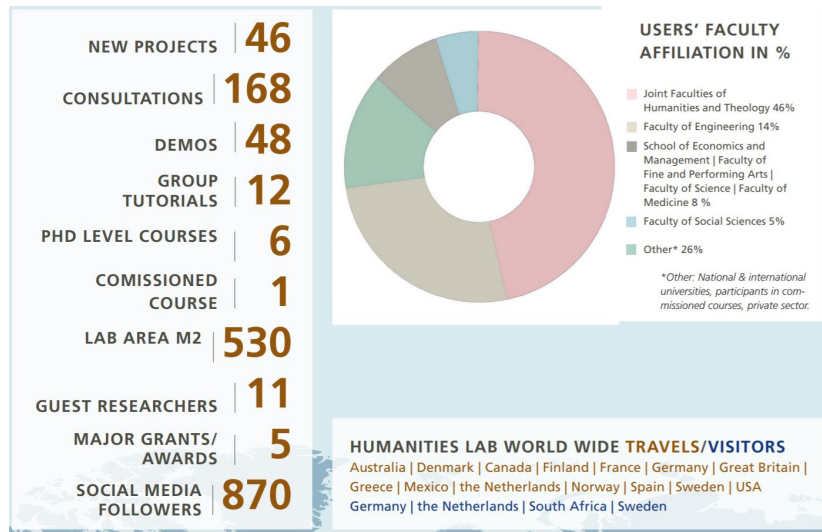
Conversations on perception
(Part of Lund University Humanities Lab)

Conversations discussing perception

Landing page for this record at corpora.humlab.lu.se

Users profile

- researchers/research groups from linguistics, language archiving and documentation, medicine
 - We run a 'corpus server' - we're also a C-centre - where **language archivists** store material <<https://projekt.ht.lu.se/rwaai>>
 - We developed a system for word association metrics (based on contextual representations) that **neurolinguists** use to correlate with ERP-measurements <<https://doi.org/10.1075/ml.19021.blo>>
 - We run a website where researchers in **prosody** perform perception experiments (audio-only and audiovisual stimuli)
 - DiacL <<https://diacL.ht.lu.se/>> - lexical/typological database for **historical linguists**
- out of scope
 - storage of text in medical health records
 - evaluation of commercial software analysis tools



(statistics for lab as a whole)

Education, Collaboration, Expectations

- tutorials on eye tracking, R, text mining, ELAN, GPS (every semester)
<<https://www.humlab.lu.se/education/current-pedagogical-activities>>
- workshop on NLP for social sciences

- RWAAI: language documentation and archiving project at Lund Uni
- NERC: NER project with Swe-Clarin nodes in Gothenburg and Linköping
- Progest: visual prosody project with Linnaeus Uni in Växjö and the Swe-Clarin node at KTH

- we're part of an upcoming DARIAH-related infrastructure application
- development of centre will be guided by its role in and how to align it with that